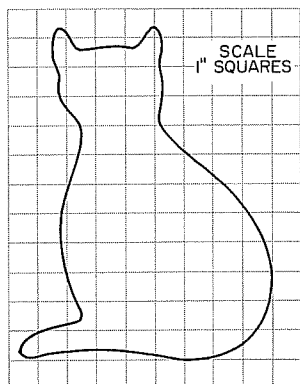
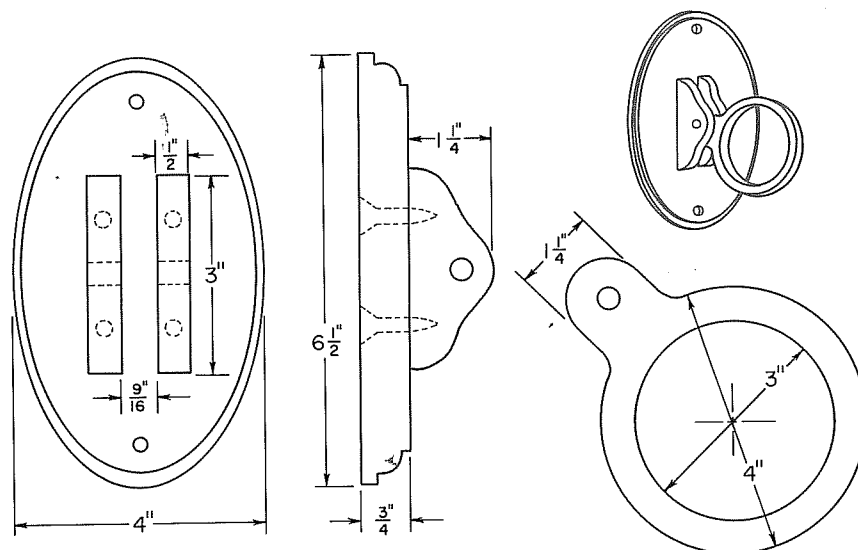


Fig. 3-8. This multiview drawing is made from a sketch of a towel ring.



CAT CUTTING BOARD

Fig. 3-9. An irregular design, such as this cat, should be drawn on a grid. This will help you make an accurate layout later.

Drawings with irregular designs and curves should be drawn on a grid, as shown in Fig. 3-9. Draw the grid to the same scale as the rest of the drawing. Then draw the design within the grid.

When laying out the design on the stock, make a full-size grid on a large piece of paper. Then transfer the design to the full-size grid and cut it out. This becomes your pattern for the layout. For more information see page 40.

Bill of Materials

A bill of materials is a complete list of the materials (wood, hardware, and finishing materials) required to make a project. A detailed bill of materials, as shown in Fig. 3-11, provides space for the following information.

- number and description of each part.
- kind of material (oak, brass, varnish, etc.).

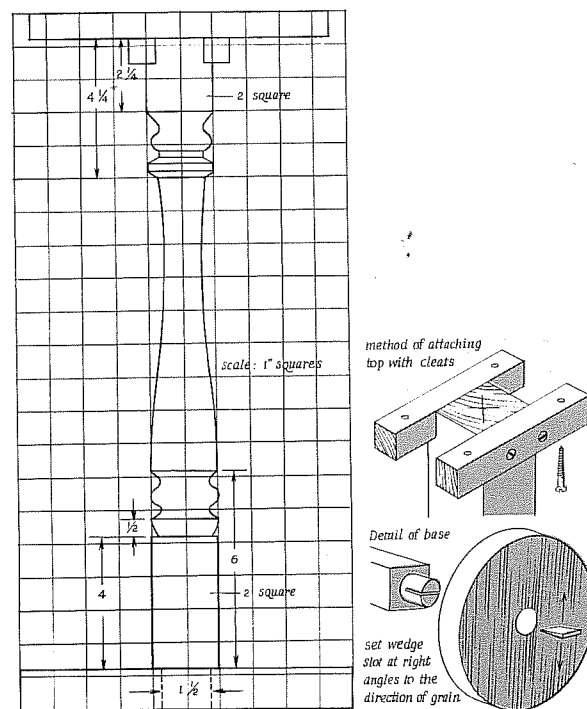


Fig. 3-10. This is what a working drawing of a fern stand might look like. See section IX.